



ARTIFICIAL TURF

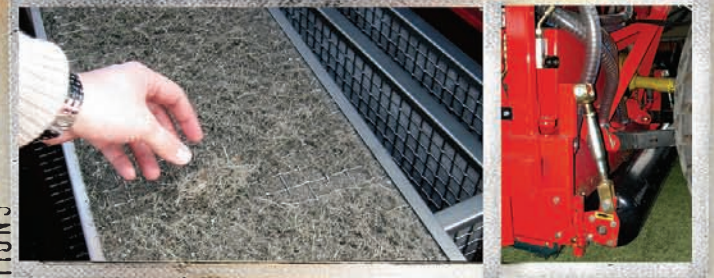
VERTI-AIR



A common problem with artificial turf is debris and bacteria buildup deep down within the infill. This problem is compounded by compaction of the material, restricting drainage through the backing material and creating damp, stagnant areas. To address these problems, the Verti-Air utilizes a rotary brush and turbine compressed air to lift all material out of the turf, dry and filter the material, sift out the debris and return the clean, dry and decompacted infill back into the turf. Even the lightest debris is removed with the exclusive fine filter screen. The Verti-Air is the ideal tool to regularly revitalize and purify any artificial turf field right down to its base.

VERTI-AIR

- Fine filter screen removes the smallest debris from infill and sand
- Easy-access debris hopper for quick cleaning
- Front roller allows for highly accurate depth adjustment



WORKING SPECIFICATIONS

Working Width	63" (160 cm)
Weight	1,213 lbs (550 kg)
Tractor recommended	35 hp (26 kW) with 1,543 lbs (700 kg) lift capacity + double acting valve
Dimensions	63" x 67" x 43" (160 cm x 170 cm x 110 cm)



FEATURES / BENEFITS

FEATURE	BENEFIT
front roller standard	accurate depth adjustment
unique filtering system	will collect even fine dust and human debris
fast working speed	higher productivity rates
vacuum air system	cleans synthetic turf right down to its roots
revitalizes infill material	healthier playing surface

